

'm/s Efi'
Motorsailer 76,50ft for Charter

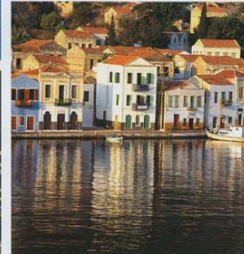


Specifications

Boat type:	Traditional motor/sailor
Built by:	Psaros Shipyards, Greece
Construction:	Wood
Decks :	Teak
LOA:	23.5m (76.5ft)
Beam:	5.92m (19.2ft)
Draught:	2.20m (10.2ft)
Engines:	1 x Daewoo 400 HP
Speed:	10 Knots
Generators:	2 x Onan (17kW+ 12.5kW) + 1 Lister 10kW
Fuel Capacity:	4000 lt.
Fresh Water Capacity:	3000 lt.
Air-Conditioning:	Fully air-conditioned in all indoor facilities with separate controls in each cabin.
Guest Cabins:	4 (all with en-suite facilities)
No of Guests:	8-9
Equipment:	JRC 2343 radar, Geonav 7C GPS Plotter, Hondex depth finder, VHF/DSC Scanti, McMurdo EPIRB, LCD TV with DVD player, audio equipment (indoor and outdoor), , Sea Tel TV-DVD-Hi-fi in all cabins.
Tender:	Gommonautica G37 rib (3.7m) with Yamaha 40Hp 4-stroke outboard engine.
Recreation:	Water-Skiing, O- rings, Banana, Wind Surfing (on request), Fishing and Snorkeling.

Fully renovated and redesigned interior facilities (2009).

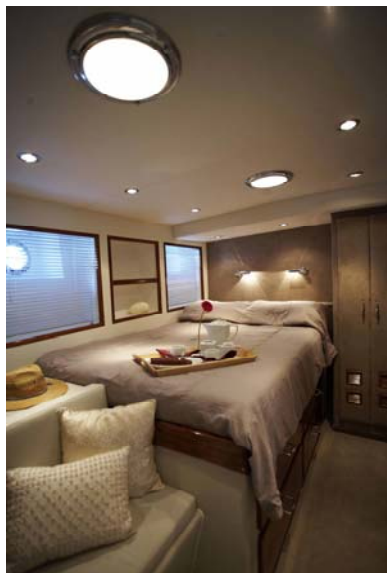
Crew : 4 (captain, mechanic-deckhand, chef, steward)



Dream your way to the Aegean. Enjoy the blue skies, white colors, and picturesque Cyclades or relax in the calm waters of the green Ionian islands. Slip off unhurried from one island destination to another. And lose yourself to a unique voyage experience.







NETO
 GROSS
 REGISTERED
 LENGTH OVERALL
 LENGTH BP
 BEAM
 DEPTH